



LITHIUM IRON PHOSPHATE BATTERY

ELECTRICAL SPECIFICATIONS

Nominal Voltage	25.6 V
Nominal Capacity	40 Ah
Capacity @ 25A	96 min
Energy	1280 Wh
Resistance	≤40 mΩ @ 50% SOC
Efficiency	99%
Self Discharge	<3% per Month
Maximum Modules in Series	1 (Single Use)

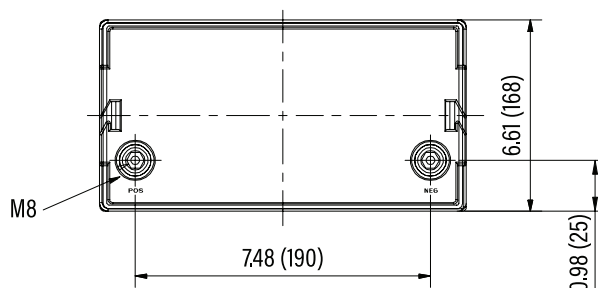
DISCHARGE SPECIFICATIONS

Maximum Continuous Discharge Current	30 A
Peak Discharge Current	70 A (7.5 s ±2.5 s)
BMS Discharge Current Cut-Off	120 A ±15 A
Recommended Low Voltage Disconnect	22 V
Discharge Voltage Cut-Off	16 V (2.0 ±0.08 vpc)
Reconnect Voltage	18.4 V
Short Circuit Protection	9 ms

TEMPERATURE SPECIFICATIONS

Discharge Temperature	-4 to 140 °F (-20 to 60 °C)
Charge Temperature	-4 to 113 °F (-20 to 45 °C)
Storage Temperature	23 to 95 °F (-5 to 35 °C)
BMS High Temperature Cut-Off	167 °F (75 °C)
Reconnect Temperature	149 °F (65 °C)

DIMENSIONAL SPECIFICATIONS



MECHANICAL SPECIFICATIONS

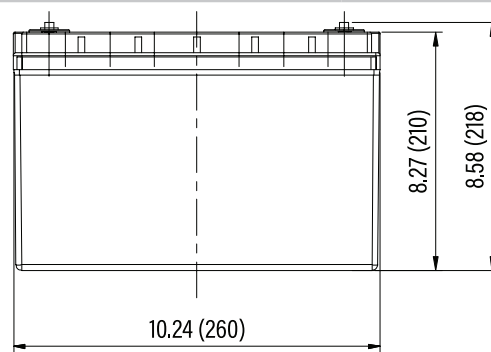
Dimensions (L x W x H)	10.2 x 6.6 x 8.3"
	260 x 168 x 210 mm
Weight	28.7 lbs (13 kg)
Terminal Type	M8
Terminal Torque	80 - 100 in-lbs (9 - 11 N-m)
Case Material	ABS
Enclosure Protection	IP56
Cell Type - Chemistry	Cylindrical - LiFePO ₄

CHARGE SPECIFICATIONS

Recommended Charge Current	10 A
Maximum Charge Current	30 A
Recommended Charge Voltage	28.0 V - 29.2 V
BMS Charge Voltage Cut-Off	31.2 V (3.9 ±0.025 vpc)
Reconnect Voltage	30.4 V (3.8 ±0.05 vpc)
Balancing Voltage	28.4 V

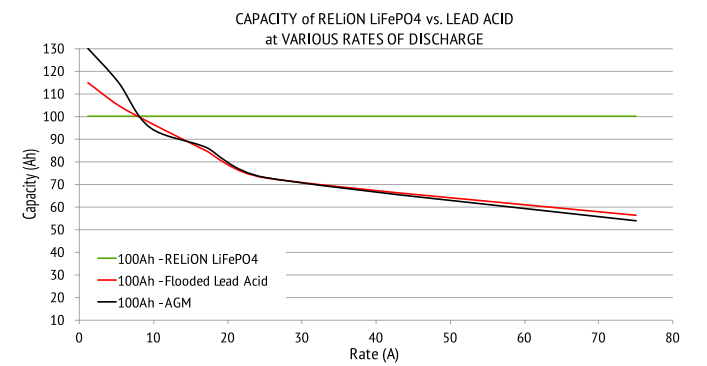
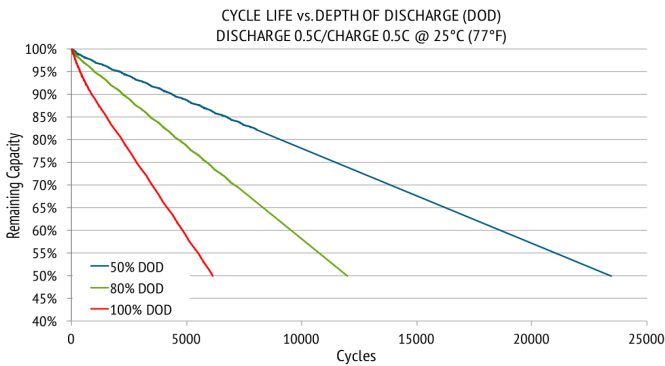
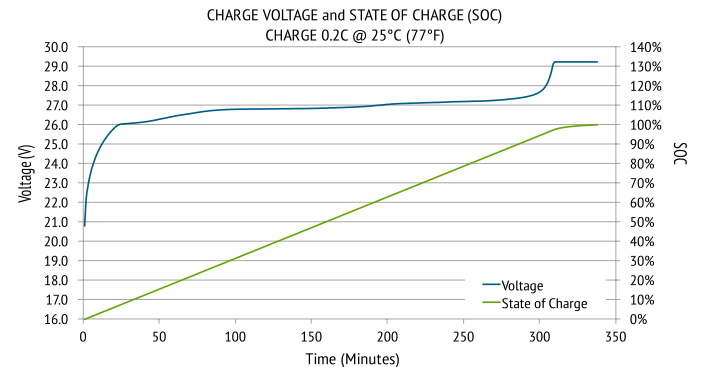
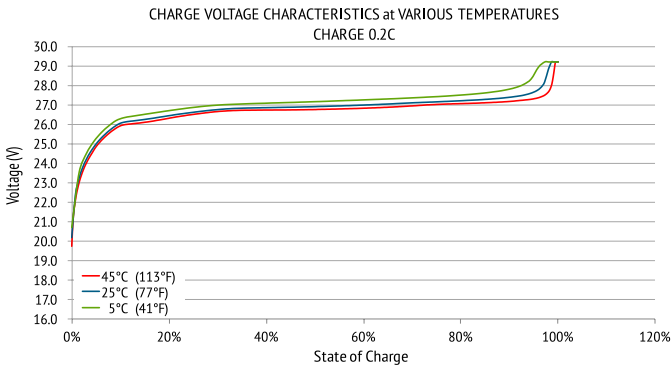
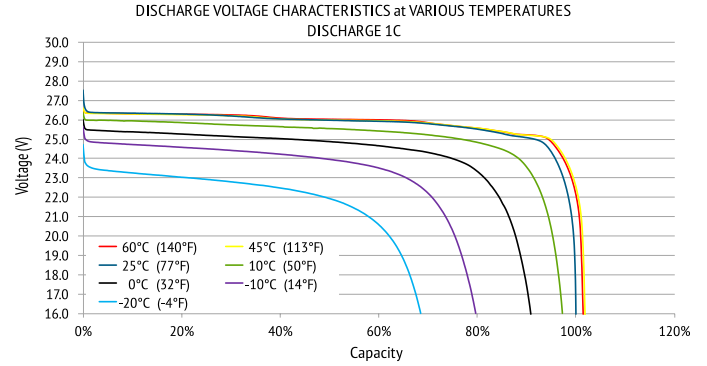
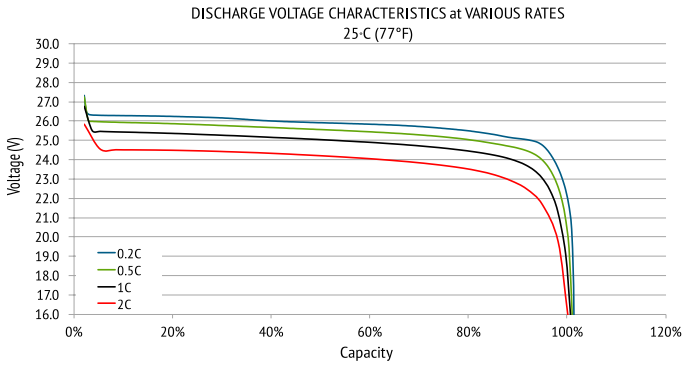
COMPLIANCE SPECIFICATIONS

Certifications	CE (battery) UL1642 & IEC62133 (cells)
Shipping Classification	UN 3480, CLASS 9





PERFORMANCE CHARACTERISTICS



RB24V40DS07.05.2018

